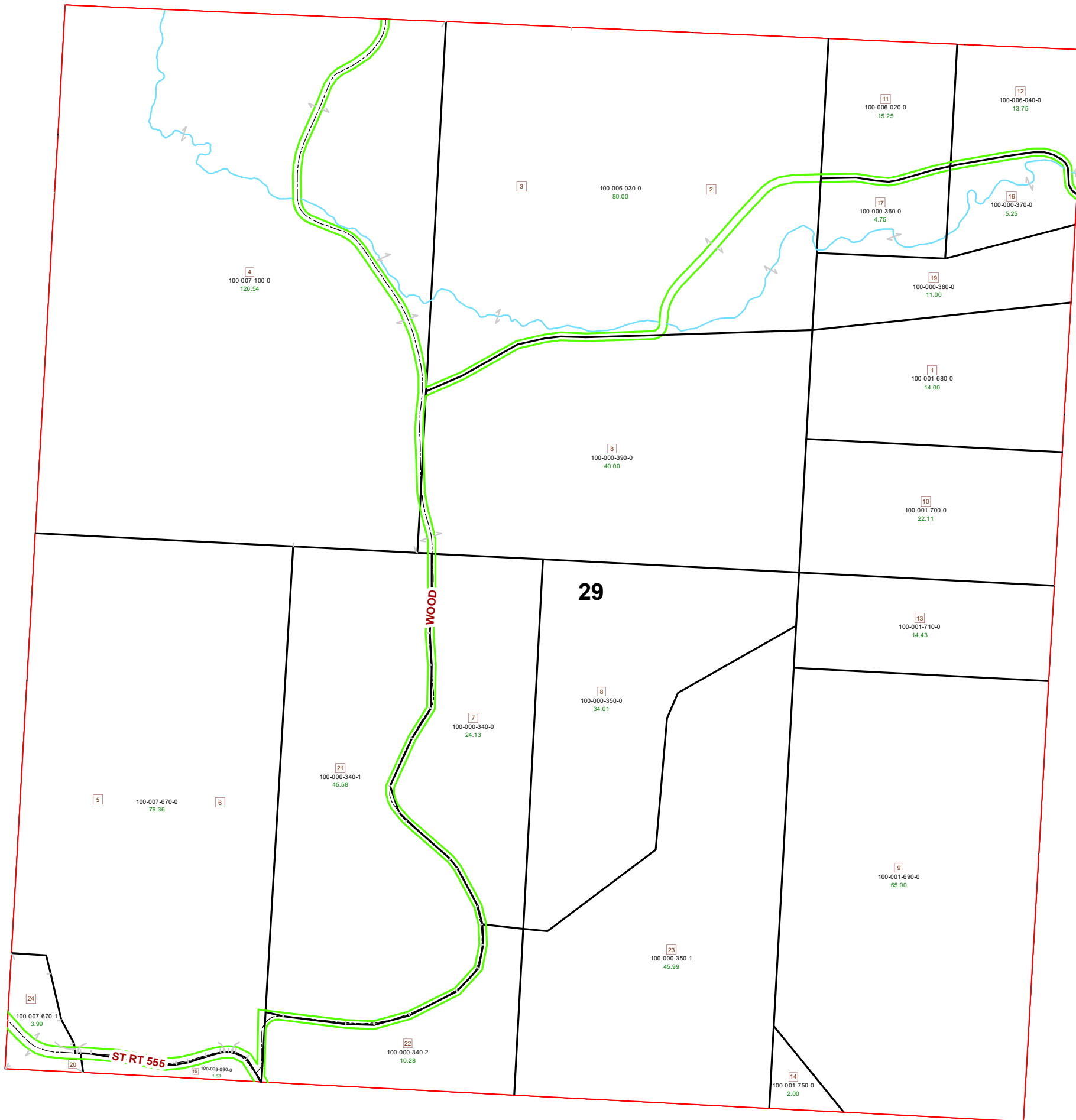
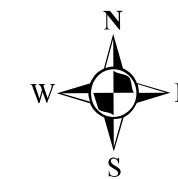


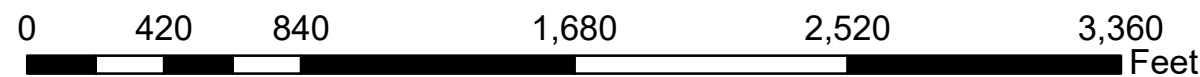
MARION TOWNSHIP SECTION 29 R12 TWP 8 MORGAN COUNTY, OH



PIN	Owner	VOL	PAGE	LegalDescr	Acres
100-000-340-1	CHAFFINS JAMES D & JAMES D II & COLUMBUS D JR	OR232	2974	R12 T08 S29 SD 21	45.581
100-007-670-0	CHRISTIE JANE TRUST C/O ROBERT J CHRISTIE	OR225	426	R12 T08 S29 SD 5-6	79.365
100-001-750-0	JEFFERS' TREE FARM LLC	OR145	430	R12 T08 S29 SD 14	2
100-001-710-0	JEFFERS' TREE FARM LLC	OR145	430	R12 T08 S29 SD 13	14.43
100-001-700-0	JEFFERS' TREE FARM LLC	OR145	430	R12 T08 S29 SD 10	22.11
100-001-680-0	JEFFERS' TREE FARM LLC	OR145	430	R12 T08 S29 SD 1	14
100-001-690-0	JEFFERS' TREE FARM LLC	OR145	430	R12 T08 S29 SD 9	65
100-000-340-2	LOPEZ DENISE & GEORGE	OR53	300	R12 T08 S29 SD 22	10.289
100-000-350-1	LOPEZ DENISE & GEORGE	OR53	300	R12 T08 S29 SD 23	45.99
100-006-040-0	LOWERS JESSE C LIVING TRUST	OR190	454	R12 T08 S29 SD 12	13.75
100-006-020-0	LOWERS JESSE C LIVING TRUST	OR190	454	R12 T08 S29 SD 11	15.25
100-006-030-0	LOWERS JESSE C LIVING TRUST	OR190	454	R12 T08 S29 SD 2-3	80
100-007-670-1	PARSONS RANDALL L & DEBORA L	OR181	44	R12 T08 S29 SD 24	3.997
100-009-090-0	VAN HORN RICHARD LEE & MARY ELLEN	OR38	493	R12 T08 S29 SD 15	1.83
100-007-100-0	WHITETAIL SALES & SERVICE LLC	OR214	2189	R12 T08 S29 SD 4	126.546
100-000-350-0	WILLIAMS CHRISTOPHER P	OR209	1993	R12 T08 S29 SD8	34.01
100-000-340-0	WILLIAMS CHRISTOPHER P	OR209	1993	R12 T08 S29 SD 7	24.13
100-000-390-0	WILLIAMS CHRISTOPHER P	OR209	1993	R12 T08 S29 SD 18	40
100-000-380-0	WILLIAMS CHRISTOPHER P	OR209	1993	R12 T08 S29 SD 19	11
100-000-360-0	WILLIAMS CHRISTOPHER P	OR209	1993	R12 T08 S29 SD 17	4.75
100-000-370-0	WILLIAMS CHRISTOPHER P	OR209	1993	R12 T08 S29 SD 16	5.25



Boundaries	
----- Hidden	--- ROW
----- Hydro	--- Section
----- Roads	--- Lot
----- County	--- Parcel
----- Township	--- Parcels



Disclaimer: The information that these maps contains is for reference purposes only. Please bring any errors to the attention of the Engineer's Office staff.

Thank you